



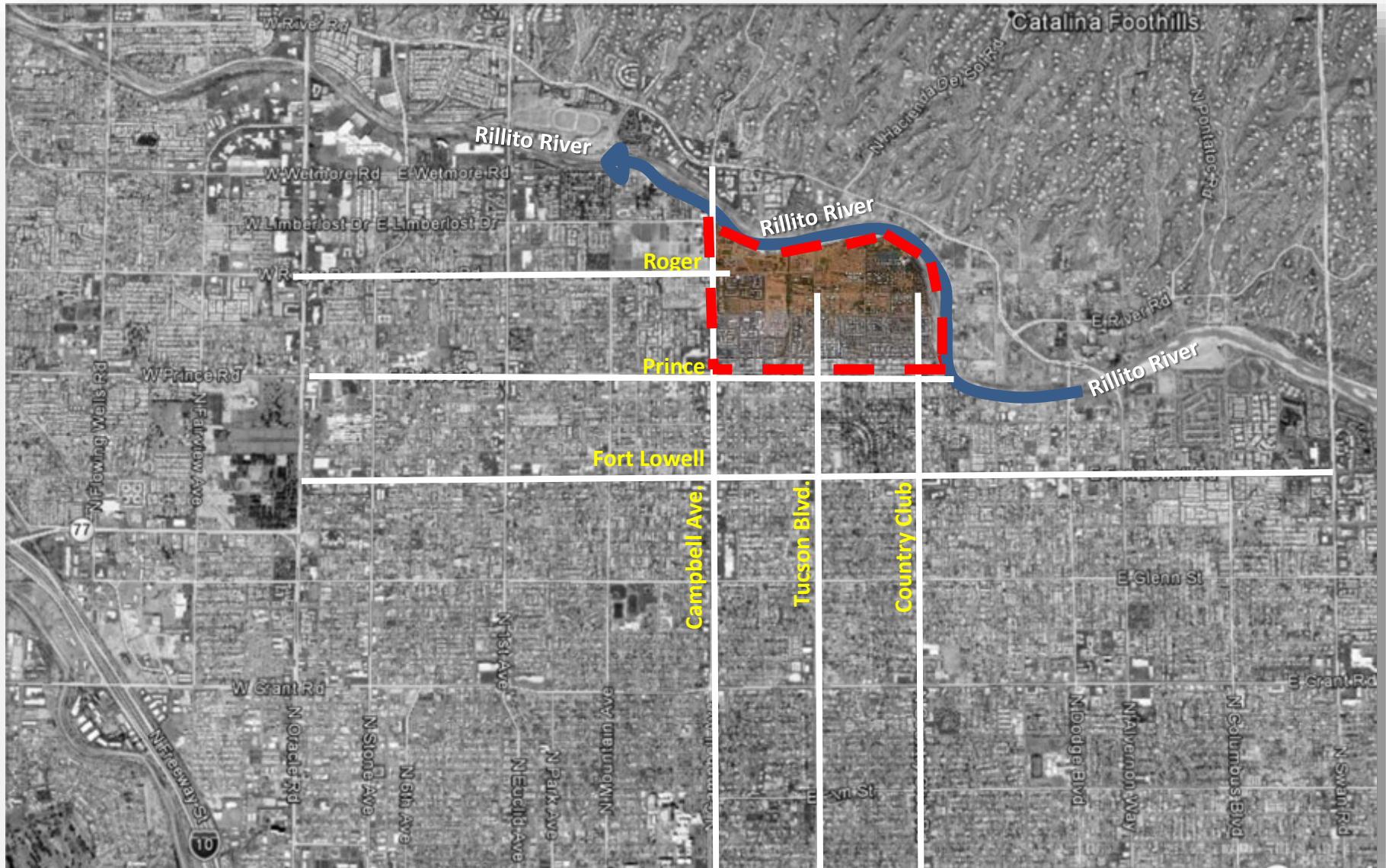
Neighborhood - *Vision & Opportunities*

...to protect and enhance our special Tucson neighborhood with its rich *artistic heritage* and unique *riparian environment*.



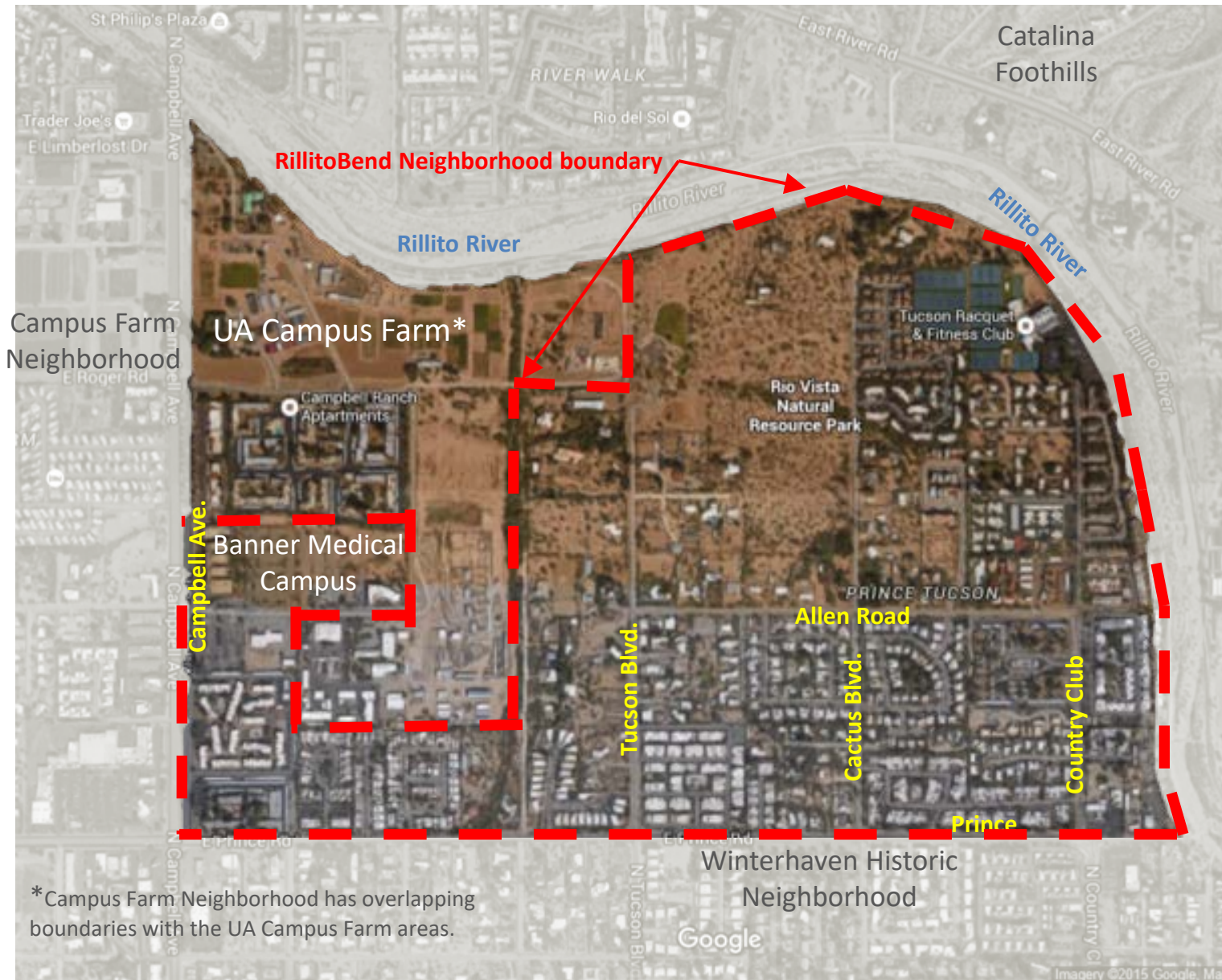
Ronstadt Home at Prince and Jackson – painted by Maynard Dixon 1945

Location

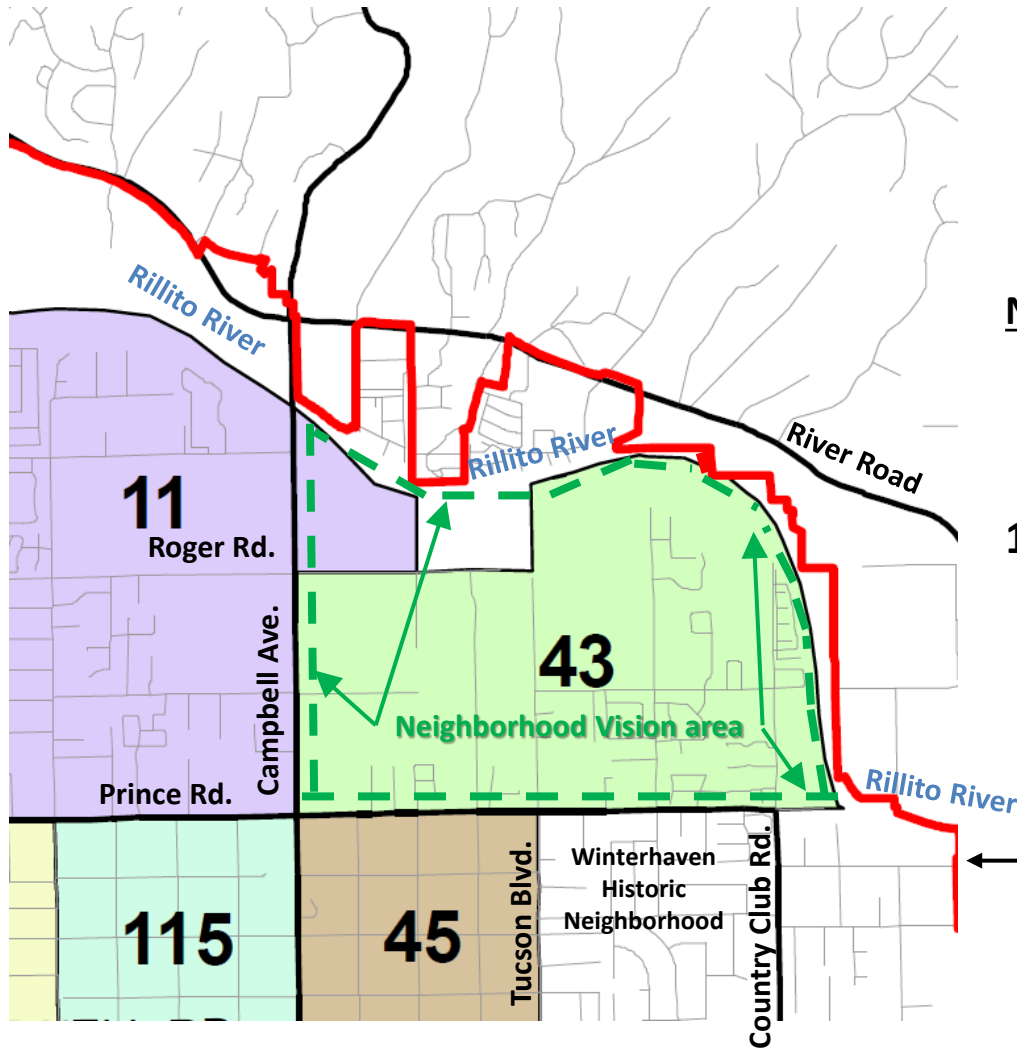


RillitoBend Neighborhood
-at the bend in the Rillito River-

Neighborhood Boundary



Adjacent Neighborhoods



Neighborhoods

- 43** – RillitoBend Neighborhood*
- 11** – Campus Farm Neighborhood*
- 45** – Richland Heights East Neighborhood
- 115** – Richland Heights West Neighborhood

SOURCE: City of Tucson – July 2015

**NOTE: the RillitoBend "Neighborhood Vision area" is more inclusive than the actual neighborhood boundary and is shown overlapping some of the Campus Farm Neighborhood. See actual RillitoBend Neighborhood Boundary on previous page.*

City of Tucson / Pima County boundary

Vision themes

The following themes identify the special characteristics of the RillitoBend Neighborhood to help guide the continuing enhancement of our community.

1. Enhance the ***livability of our streets***
2. Manage our precious ***watershed resources***
3. Protect and restore our ***riparian shade tree environment***
4. Showcase our unique ***artistic heritage and spirit***
5. Support our ***recreational and cultural destinations***



1. Enhance the *livability of our streets*

a. *Enhance our neighborhood streets to make them safe for pedestrians, equestrians, and bicyclists with traffic calming strategies for automobiles*



b. *Develop safe, shaded, and comfortable transit stops for SunTran transit riders on Prince Road*

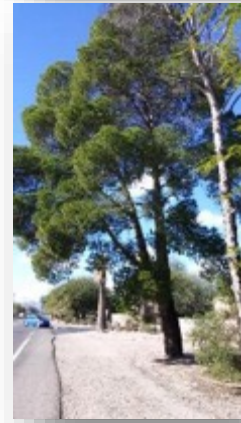


c. *Create and sustain shaded streetscapes to provide visual and functional connections for our various neighborhood areas*



2. Manage our precious *watershed resources*

- a. *Detain and connect stormwater basins to create and support landscapes that reflect our riparian environment*
- b. *Encourage native plants to reduce irrigation demands in all public use areas*
- c. *For landscape areas fed by stormwater, encourage and sustain tall trees to support our riparian environment*



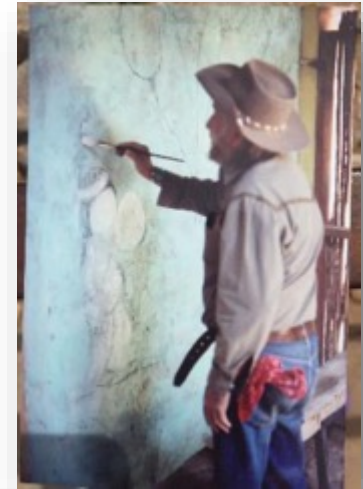
3. Restore our *riparian shade tree environment*

- a. *Sustain and encourage tall tree habitats for our raptor population and for shade to reduce the urban heat island effect*
- b. *Connect habitat areas with appropriate landscaped corridors*
- c. *Encourage “backyard habitats” with educational and certification programs*



4. Showcase our unique *artistic heritage and spirit*

- a. *Identify our past and current artists and celebrate their unique place in the neighborhood*
- b. *Encourage new artists with neighborhood public art that will inspire neighborhood engagement*
- c. *Showcase the artistic heritage and spirit of RillitoBend neighborhood with distinct signs and art at key highly visible gateways to the neighborhood*

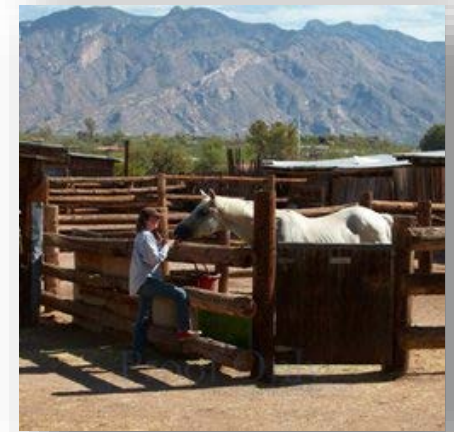


5. Support our **recreational and cultural destinations**

a. *Enhance and encourage pedestrian and bicycle access to public destinations:*

- i. *Tucson Racquet Club*
- ii. *Valley of the Moon*
- iii. *Rio Vista Natural Resource Park*
- iv. *Pima County Chuck Huckelberry Loop*
- v. *Winterhaven Historic Neighborhood seasonal events*
- vi. *Hitching Post Ranch equestrian center*

b. *Work with stakeholders to support safe access, mitigate impacts on adjacent neighbors, and protect the long-term sustainability of each destination*



Neighborhood context

The Neighborhood has a unique heritage as the home of artists drawn to the rural character of a neighborhood nestled along the banks of the Rillito River with views of the Santa Catalina Mountains. Artists in the present honor the tradition of former residents such as Maynard Dixon, Ted DeGrazia and the Ronstadt Family.



Maynard Dixon's home – Prince and Jackson



The bank of the Rillito River - 1936



Ted DeGrazia's home and studio at Prince and Campbell



Cactus Blvd. – salvaged native mesquites at Rancho Morado

Neighborhood Character - Buildings

There are many elements in the RillitoBend Neighborhood that enhance the neighborhood character. Each of the following images represent just a few of these characteristics and are keyed to the accompanying reference map.



1 2624 E. Clays Alley



2 3645 N. Cactus Blvd



3 Rancho Morado two-story house



4 Adobe Garden development – entry gate



5 Maynard Dixon's house – Jackson and Prince.



6 2713 E. Prince Road



7 Valley of the Moon – Allen Road



8 Placita Santa Lucia development



9 Lockard/Keller house - 3930 N Cactus Blvd

Neighborhood Character - Landscape



A Prince Road – Tucson Clean & Beautiful project



B Winterhaven Village volunteer garden



C The "Rain Garden" with heritage mesquite trees on Cactus Blvd.



D Santa Lucia – typical entry gate landscaping



E Racquet Club Village – Casitas entry landscape



F Lanterra – Prince Road entry landscape



G Jackson Road – wrought iron entry gate



H 2525 E. Prince Road – Street wall landscape



I 3645 N. Cactus Blvd – streetscape landscape

Neighborhood Character - Amenities



a Hitching Post Ranch equestrian center



b Pima County / Chuck Huckelberry Loop



c Rio Vista Natural Resources Park



d Sue Ann Breems Rillito River murals



e Extreme Batty Biker – Stephen Fairfield



f Campbell Avenue bats



g Tucson Racquet Club

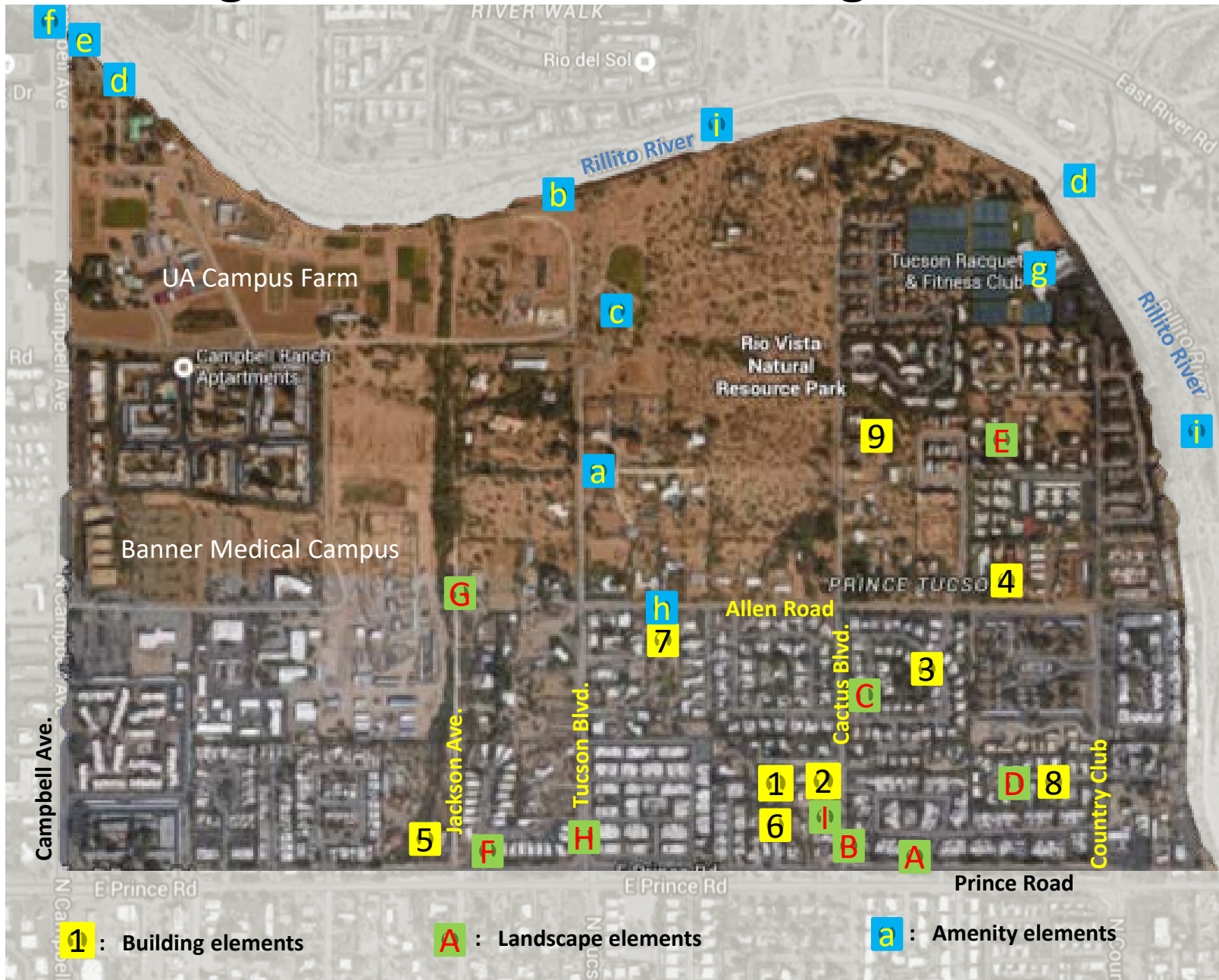


h Valley of the Moon



i Rillito River

Neighborhood Character Image Locations



1 : Building elements

A : Landscape elements

a : Amenity elements

Past Projects

Neighborhood residents have volunteered to protect and to create unique neighborhood features.



Salvaged mesquites in existing stormwater basin on Cactus Blvd.



Valley of the Moon designated a Tucson Historic Landmark in May 2015



Volunteer garden projects on Cactus Blvd.



Cactus and Allen traffic circle



RillitoBend welcome mural by Sue Ann Breems



Rio Vista Natural Resources Park



Protection of large trees



Public art on the Rillito River



Labyrinth



Prince Road Stormwater Harvest Landscape grant

Opportunities

There are many areas that need greater attention to sustain City right-of-way landscaping, to capture stormwater, to improve neighborhood esthetics, to create identity, to restore wildlife areas, and to create safe basic urban amenities.



Bus stops – Prince Road



Pedestrian and bicycle safety - Prince Road



Stormwater detention - Meadow View trench



Tie-in to the re-claimed water line in Allen Road for right-of-way landscaping irrigation



Pedestrian /ADA access - Prince at Tucson Blvd.



Neighborhood identity - Prince Road at Campbell Ave.



Neighborhood esthetics - Allen Road at Country Club

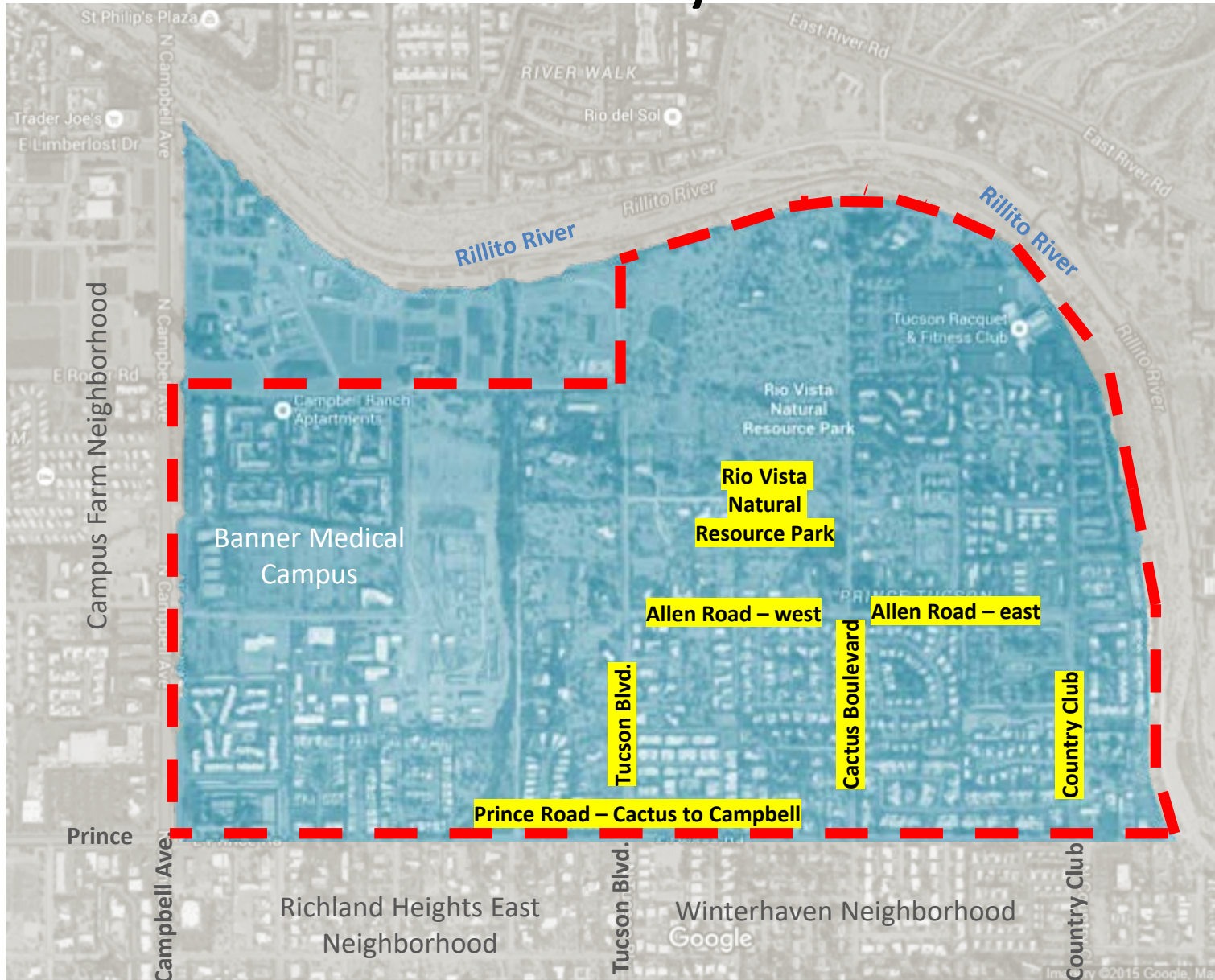


Cactus Blvd – “Zocalets” (pedestrian gathering areas)



Habitat restoration - Cactus Blvd. at the Rillito River

Rillito Bend Current Priority Areas*



*Project specific workplans will involve neighbors in each area.



RillitoBend Neighborhood – a neighborhood that thrives thanks to its many volunteers!

For more information, visit our web site at:

<http://rillitobendna.org/index.html>

For list of key neighborhood contacts, see the RESOURCES page on our web site:

<http://rillitobendna.org/resources.html>